

Comenius project

MARE NOSTRUM

First mobility in Pescara, Italy

October 2013

Our maritime landscapes



Brittany is mainly maritime.

Its **coastline** is about 2500 km long.

Today, our main goal is to make you discover what some people call one of the most beautiful harbour (Rade) in the world.

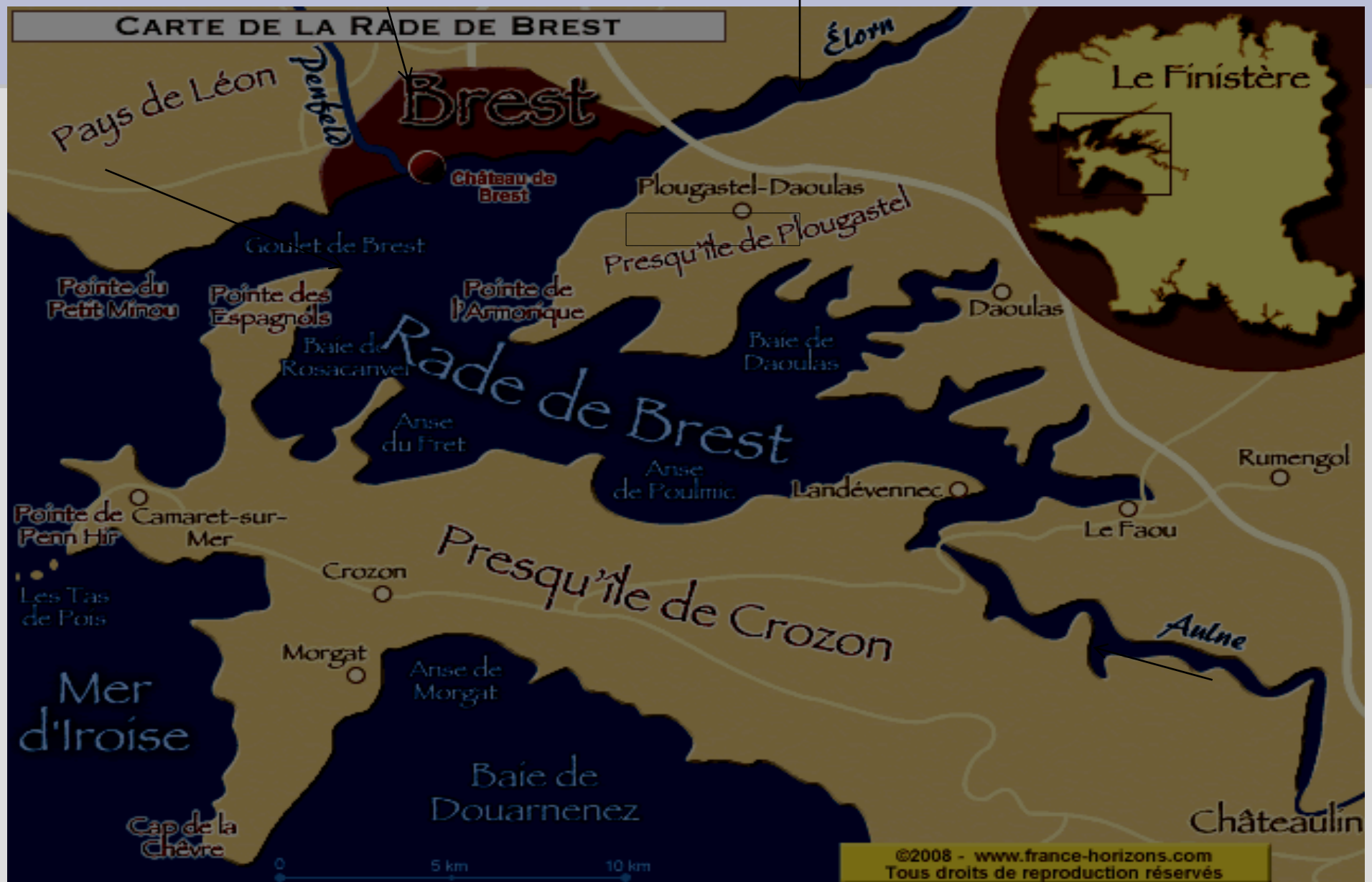
Whereas **Brittany** is the most touristic French **region**, Brest harbour has preserved its anonymity and mystery.

Its **coastline** is about **170 km** long.

At first sight, **Brest** « **cité du Ponant** » can be considered as an austere city but it is really seductive.

Let's have a look at the map !

BREST HARBOUR



A VIEW FROM THE SKY



« La Rade » de Brest

- A landscape word
- The name of a sea area which is neither a bay, a pool nor a gulf.
- A mystery name...

Is Brest harbour an exception to the rules ?

- Sea or countryside ?

- Rivers or abers ?

- Inlets or pools ?

- Here, oak trees let their acorns fall into the sea and the boats lie on grass and sail past cows...



**A view on Brest harbour from the bridge.
In the background we can make out the city of
Brest.**



Brest harbour is surrounded by two important rivers :

- the Elorn River**
- the Aulne River**

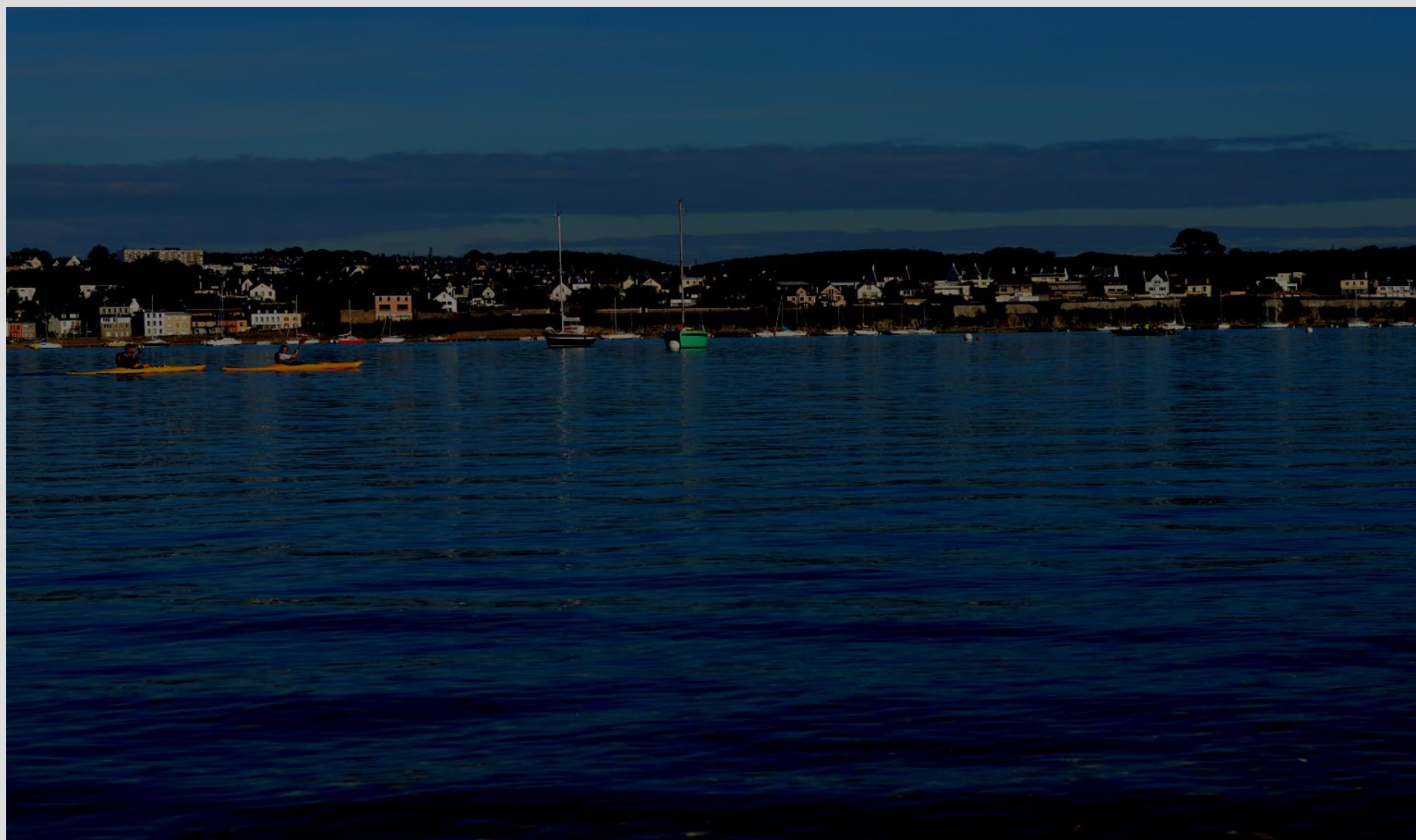


The Elorn river



The Iroise Bridge over the Elorn river leads to Brest





- .This river is situated in the north**
- .It is open to shipping as far as the city of Landerneau**
- .At low tide, its first banks turn into shores, inlets and tiny harbours where we can see wrack (goëmon)**

A view from the old bridge



The Aulne River

- It becomes a real river when it meets the waters of Brest harbour in Landévennec.
- Between Landévennec and Plougastel-Daoulas, there are 7 coves (anses) alimented by smaller rivers, streams or brooks.
- It is also open to shipping and fishing.

Terenez Bridge



A view on the river from Landévennec



The landscapes within the harbour are really astonishing !

- When visitors come to Plougastel to admire the sea, first they may only discover the countryside with its farms, cows, hilly meadows, tomato and strawberry greenhouses and a dense vegetation made of red oaks and small forests.
- The roads to the sea are narrow and secret.

Brest harbour is an extraordinary large area of water where the countryside and the coastal life mingle with the rhythm of the tides.



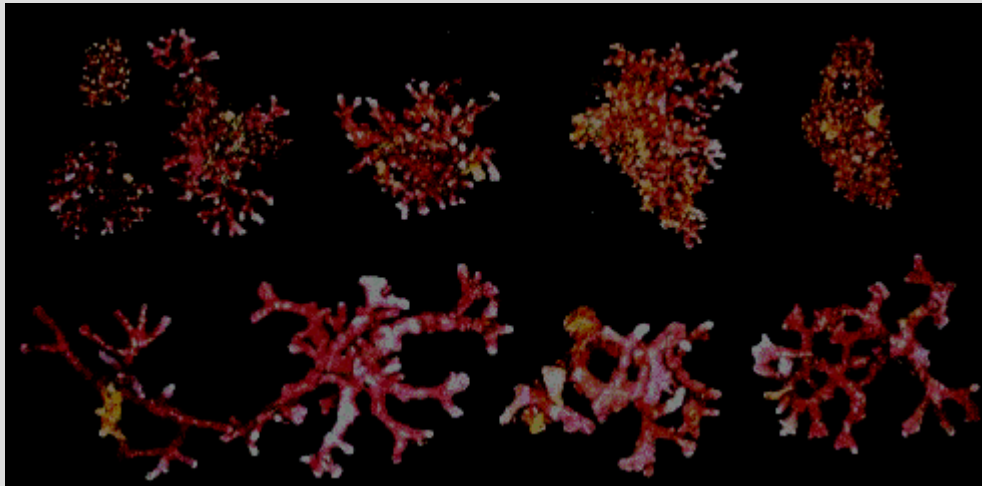


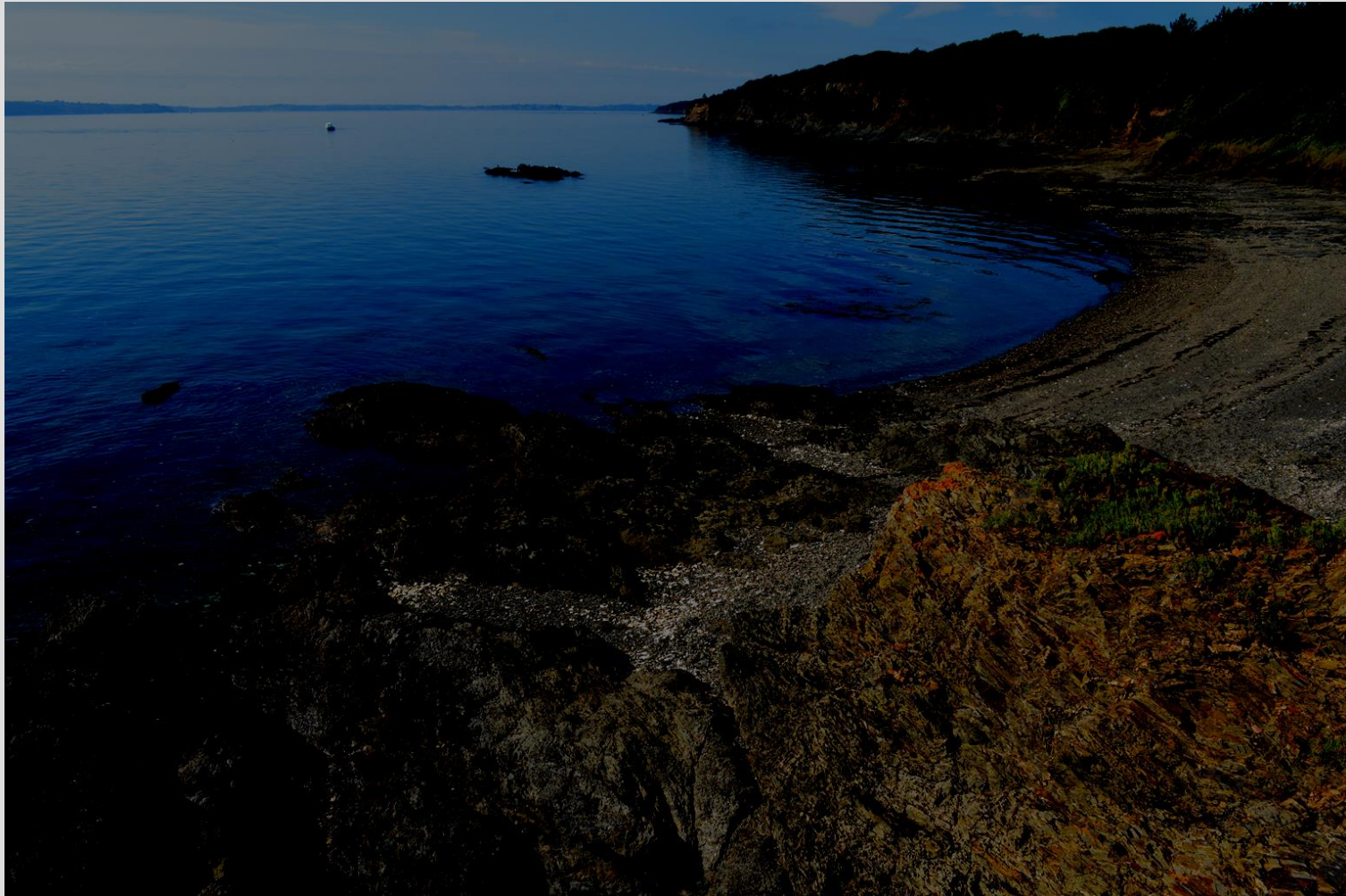
The coastline is mainly made of sludge,
« maërl », lying long and green grass, rocks
and dead shells.

There are almost no sandy beaches.



The Maërl is used as a natural fertilizer





What about the flora ?

The flora is very particular since it gathers a curious mixing of maritime plants and a natural countryside vegetation.

This is due to the fact that the exposition to the salty wind is less hard than on the coast.

The ground is covered in brooms, heather, gorse and rock samphires.





Rock samphire



The marine activity is present everywhere

The marina « Le moulin Blanc »



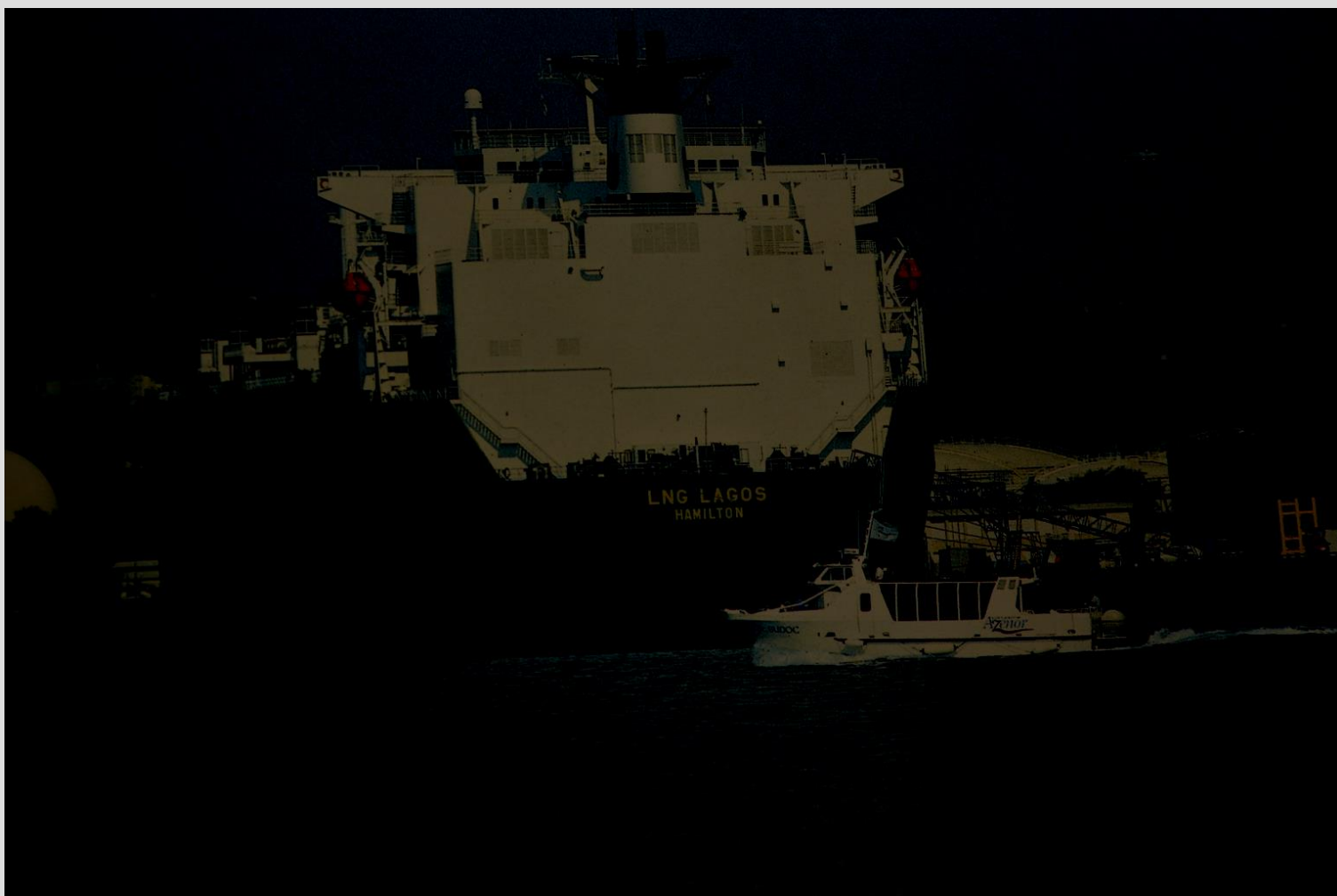


In the background, Oceanopolis, the aquarium



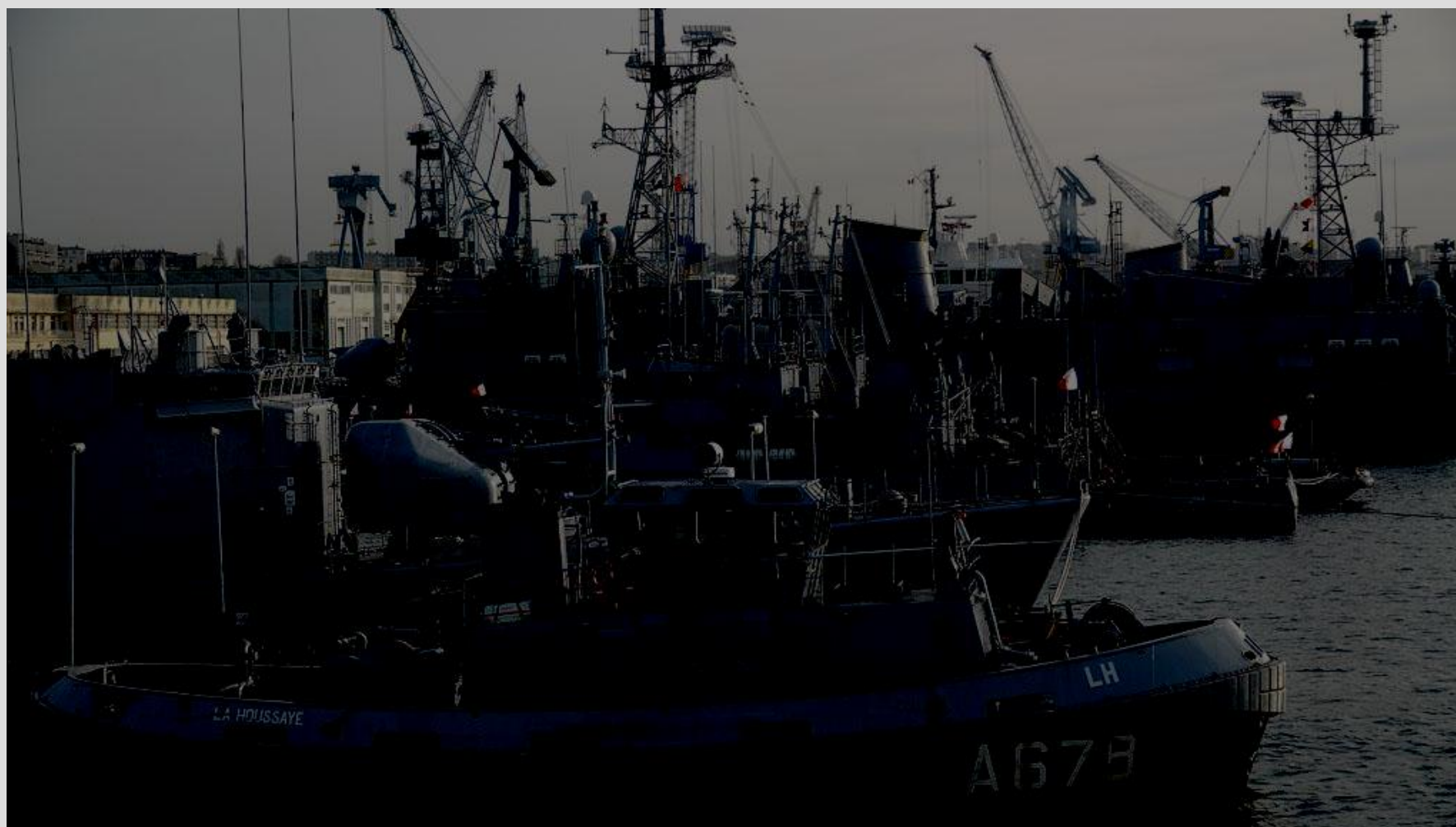
The commercial port
where huge oil and gas tankers,
container ship or liners
regularly put in.



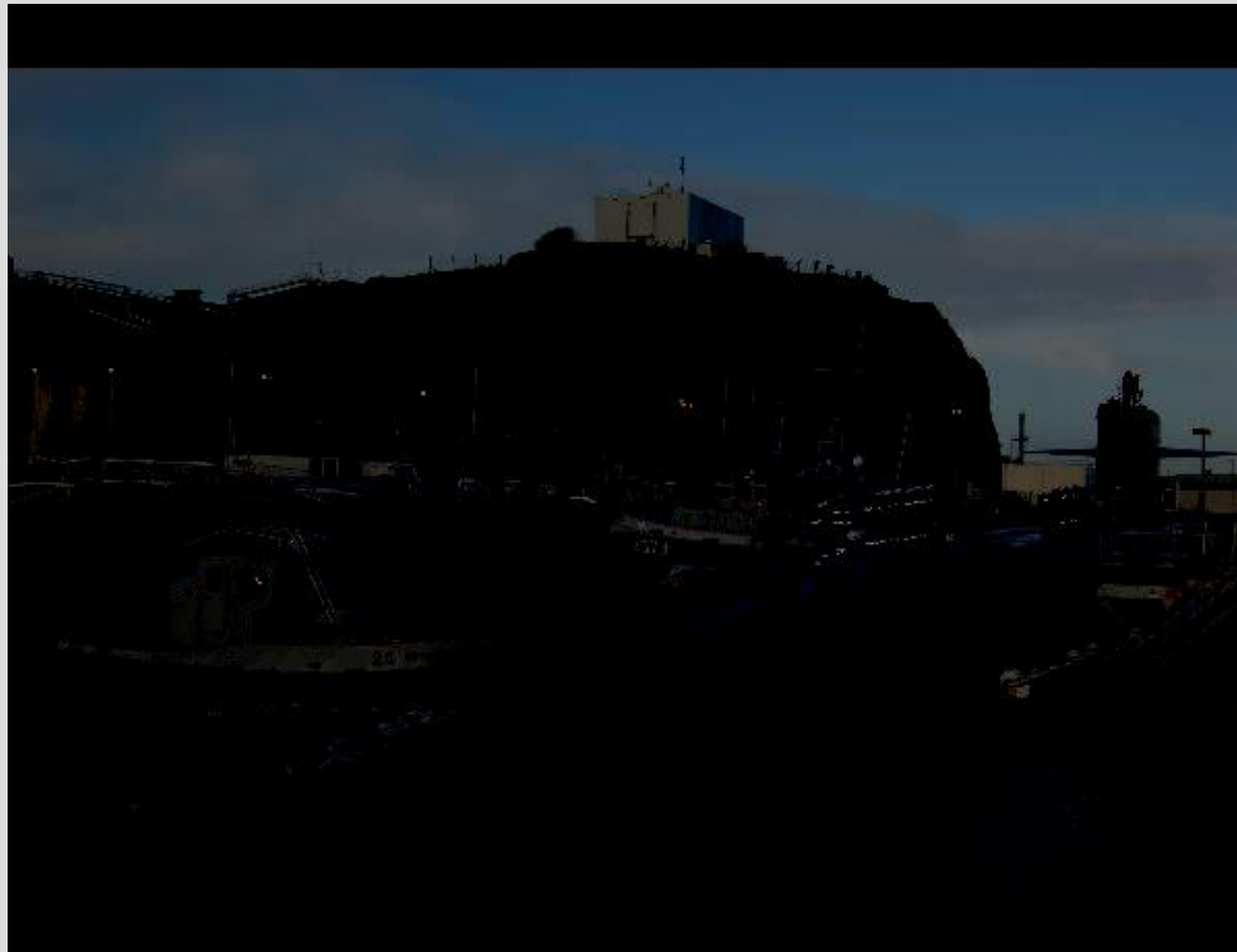





The naval base



«L'Ile Longue» shelters the French nuclear submarines







- Today Brest has become the European capital of maritime sciences and industries.

- Every 4 year, Brest organises the most important sailing event in the world.



IUEM (Sea European Institute)



(c) Paul Treguer / CNRS

Oceanopolis





